

# DOWNLOAD

[How To Configure 802.1X For Mac Access Control](#)

The screenshot shows the 'Local Network Editor' window with the 'Wired 802.1X' tab selected. The main area contains the following configuration options:

- Configure 802.1X port-based network access control for this network.
- Enable 802.1X:
- Reauthentication Period: 3600
- Auth Server IP Address: 127.0.0.1
- Auth Server MAC Address: 00:00:00:00:00:00
- Port: 1812
- Password: [Redacted]
- Acct Server IP Address: 127.0.0.1
- Acct Server MAC Address: 00:00:00:00:00:00
- Port: 1813
- Password: [Redacted]

At the bottom of the window are 'Submit' and 'Cancel' buttons.

[How To Configure 802.1X For Mac Access Control](#)

---

**DOWNLOAD**

---

After the NAC mode is changed, save the configuration and restart the device to make the configuration take effect.. SwitchA  
aaa SwitchA-aaa authentication-scheme abc SwitchA-aaa-authen-abc authentication-mode radius SwitchA-aaa-authen-abc quit  
Configure an accounting scheme acco1.

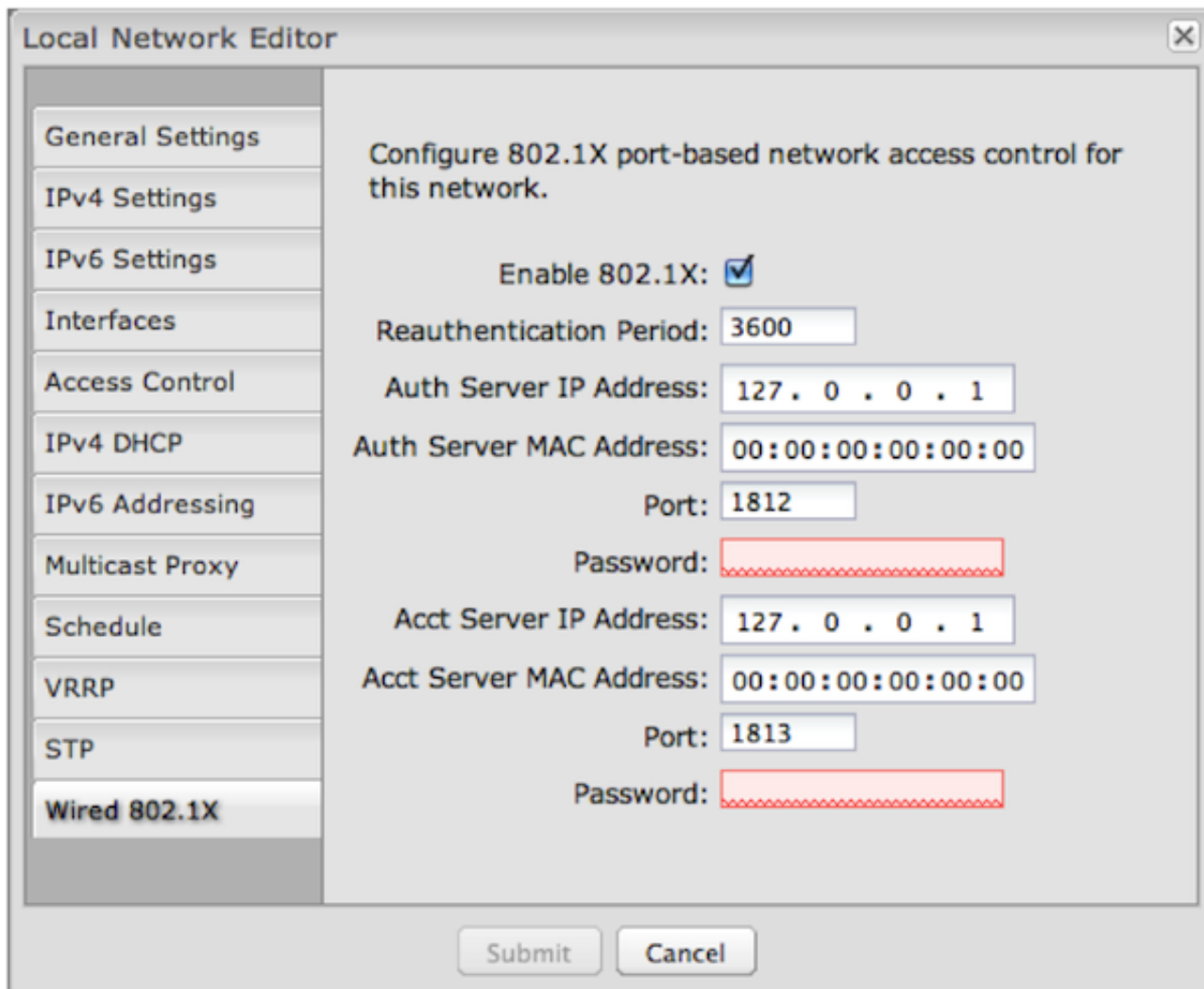
### 1. [create access control](#)

Please see below for more details Authentication Overview 802 1x is a port-based network access control protocol and 802.. 1x authentication function on the aggregation switch and connect a single centralized authentication server to the aggregation switch in bypass mode.

## **create access control**

create access control [Ea Games Generals Zero Hour](#)

1x authentication is one of NAC authentication modes Configure 802 1X Access Control Software Installation AndConfigure 802.. Networking Requirements Enterprises have high requirements on network security To prevent unauthorized access and protect information security, an enterprise requests users to pass identity authentication and security check before they access the enterprise network. [Ben 10 Download Games](#)



[Free](#)

[Arch Modeling Software Mac](#)

[DwellClick 2.2.4 Download](#)

168 100 100 1812 SwitchA-radius-rd1 radius-server accounting 192 168 100 100 1813 SwitchA-radius-rd1 radius-server shared-key cipher Huawei2014 SwitchA-radius-rd1 quit Create an AAA authentication scheme abc and set the authentication mode to RADIUS.. Configure the ISE: a Log in to the ISE Add an account to the ISE Add switches to the ISE.. Configure authentication rules, authorization results, and authorization rules on the ISE.. 1X Access Control Software Installation AndPortal authentication also does not require client software installation and provides flexible deployment, but it has low security.. Enable 802 1x authentication on GE001 and GE002 By continuing to browse the site you are agreeing to our use of cookies. [The Appropriateness of Celebrating Earth Day in Indonesia Based on Natural Relationships in Pancasila](#)

[Download Adobe Media Encoder Cc 2015 Mac](#)

Procedure Step 1 Configure the aggregation switch Create VLANs and configure the VLANs allowed by interfaces so that packets can be forwarded.. Only authorized users are allowed to access the enterprise network To reduce network reconstruction investment, you are advised to configure the 802.. As a result, 802 1x authentication is applied to scenarios with new networks, centralized user distribution, and strict information security requirements.. Configure the aggregation switch, including the VLANs interfaces belong to, parameters for connecting to the RADIUS server, enabling NAC authentication, and access right

---

to the post-authentication domain.. Configuration Notes | The Cisco Identity Services Engine (ISE) in 2 0 0 306 functions as the RADIUS server in this example.. Ensure the reachable routes between the access switches (SwitchC and SwitchD), aggregation switch (SwitchA), and ISE.. You do not need to configure authentication-free rules for the server on the switch.. SwitchA radius-server template rd1 SwitchA-radius-rd1 radius-server authentication 192.. Configure the access switches, including the VLANs and 802 1x transparent transmission. ae05505a44 [Red Giant Universe Red Giant Universe For Mac](#)

ae05505a44

[Dexter: More than just CP](#)